



# ***How to Install Your REVO6***



## **Happy REVOsafe™ Mowing!**

THANKS for your purchase of the REVO6! The first thing you will need to do is remove your existing metal blade(s) before installing your REVO6.

Here is how to replace the lawn mower blade and install your REVO6 in four simple steps. To prevent a fuel spill, tackle the project after running the mower dry or siphoning out the gas (a turkey baster also does the trick).

### ***Step 1***

Follow your lawn mower manual in regard to removing/replacing your metal blades.

### ***Step 2***

Once you have removed the blade assembly, you are ready to install your REVO6 using the same bolt or nut that held the metal blade in place, along with the appropriate spacer provided that matches the hole type of your removed blade.

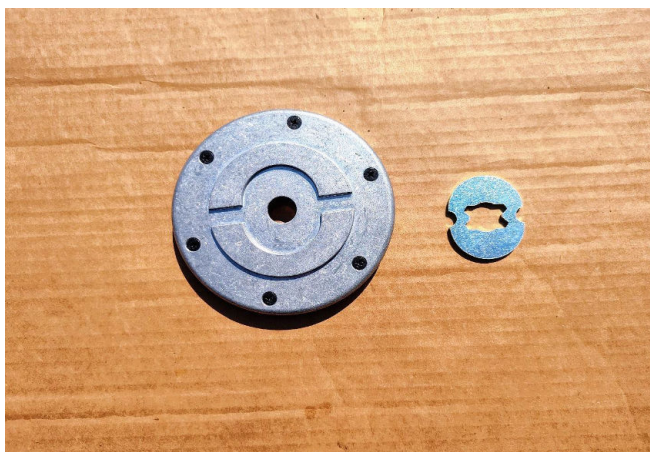


Place the REVO6 top up (the side the spacer is inserted) and align the holes of your spacer with the design on the lawn mower. Insert the bolt or nut and finger tighten until snug to ensure you do not cross-thread the bolt or nut. Tighten and torque the bolt or nut according to the lawn mower manufacturers recommendation. Some manufacturers recommend using a torque wrench for this task, since over tightening a bolt could cause it to crack, while under tightening it could allow the REVO6 to become loose and out of balance.

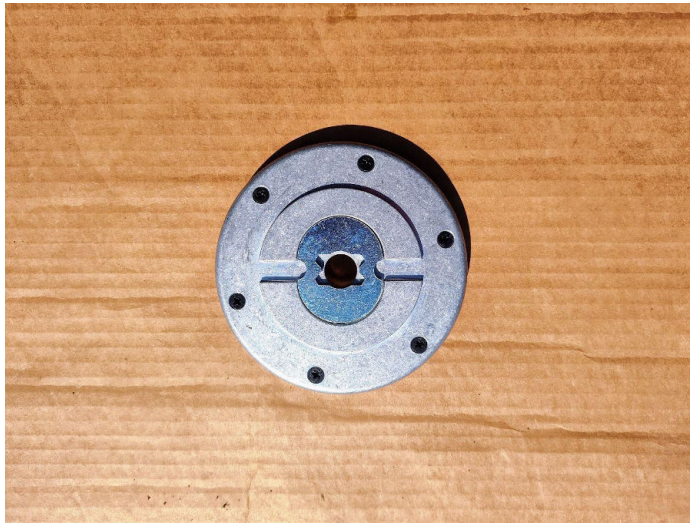
Riding mowers and Zero Turn mowers will only require the same 5/8" bolt or nut, along with the appropriate spacer. For push mowers the images below will assist you with adding the 3/8" flat washer and 3/8" bushing to accommodate the conversion from metal blade to the REVO6.



View of the top of the REVO6 (faces toward the underside of the mower deck) with a 4-point spacer.



View of the top of the REVO6 with 4-point spacer inserted.

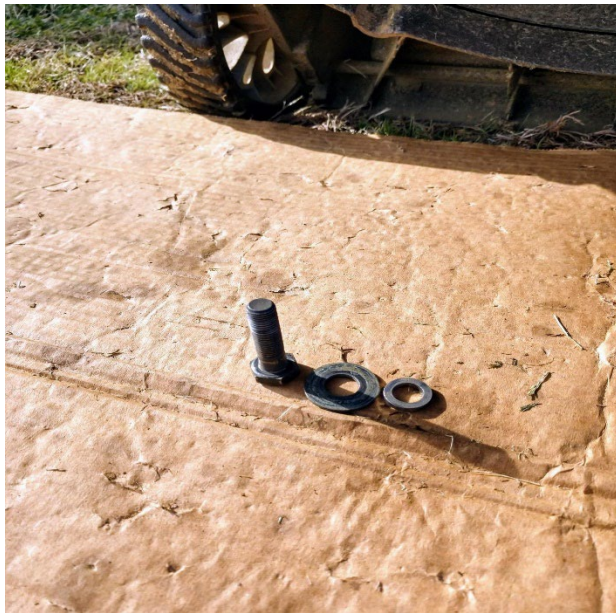


View of the REVO6 and underside of Troy-Bilt 21" push mower w/ 4-point spacer.





View of the 3/8" bolt, 3/8" flat washer, and 3/8" bushing to attach the REVO6 to a Troy-Bilt 21" push mower.



View of the REVO6 secured to the underside of a Troy-Bilt 21" push mower.



### Step 3

You are now ready to insert your REVO6 line. Insert the end of the line into any of the six holes and push toward the center. Once you have the line inserted, pull/push the line until the outside end just clears the inside of your deck. You may need to trim the end to ensure a proper fit and that the line does not extend below the inside of the hub or does not hit any part of the inside of the deck. Repeat this process for all six holes and for each REVO6 on deck mowers with more than one REVO6.

First view of the REVO6 attached to Troy-Bilt 21" push mower with one REVOLine inserted. The line is inserted from the outside towards the inside of the REVO6. The line is adjusted or removed by pulling it from the INSIDE of the REVO6.

Second view with all six REVOLines inserted.



#### **Step 4**

Before flipping the mower back upright or lowering your deck mower, take a moment to clean out the underside of the deck. This will prevent the built-up clippings from compromising airflow.

Line replacement will be required when you start to notice any skips in your cutting. You will replace the line by pulling the worn or broken line out from the center of the REVO6 and replacing it in the same manner as you initially inserted the line in Step 3.

You are now ready to join the Blade Solution Revolution and SAFEMOWING!

For any questions or assistance, please email us at: [support@safemowing.com](mailto:support@safemowing.com)

You can order additional REVO6 units or order replacement line on our website at: <https://safemowing.com>

***Your Safest, Most Efficient Mowing Ever***

